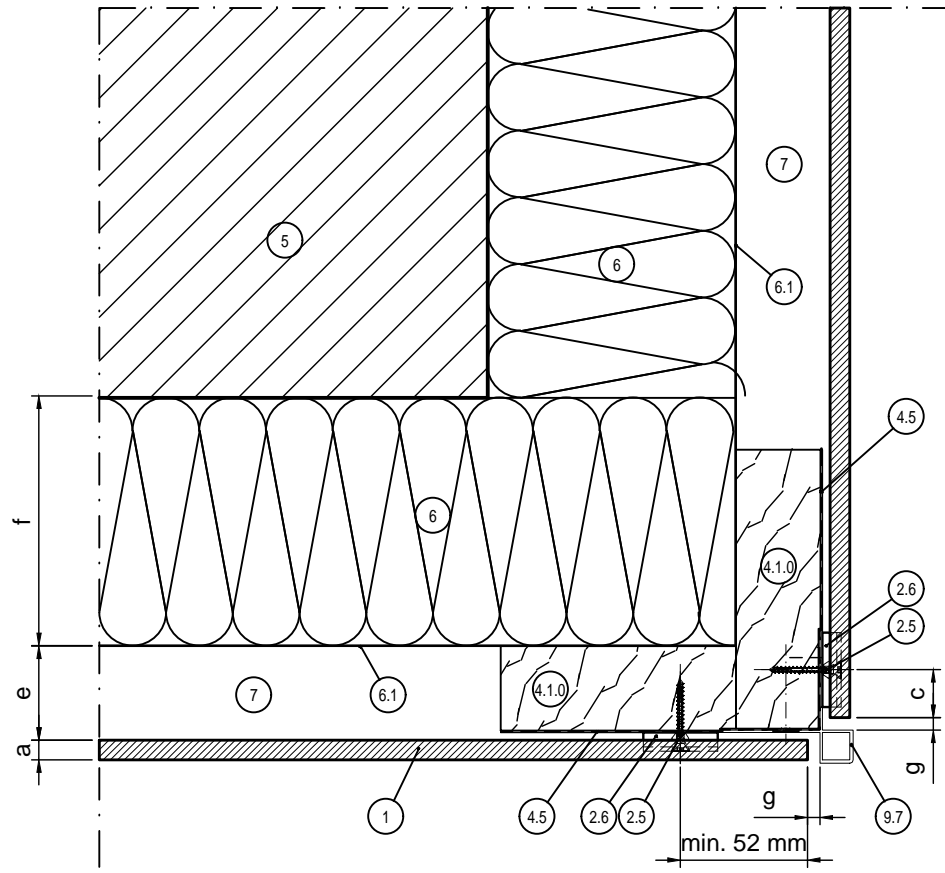


# Horizontal section h2.1



LEGEND:	
1	Trespa® PURA NFC® panel
2.5	Counter sunk screw (WÜRTH 3.5 30/25, AW 20)
2.6	Universal clip
4.1.0	Vertical timber batten (min. 95 - 110 x 34 mm)
4.5	EPDM gasket
5	Wall
6	Insulation
6.1	(UV resistant) breather membrane (optional)
7	Ventilated cavity
9.7	Outer-corner profile (PROFACE® CORNEX C128-A)

GENERAL INFORMATION:	
a	Panel thickness 8 mm.
c	Edge clearance min. 20 mm, max. 10 x panel thickness
e	Ventilation min. 20 mm. Recommended max. cavity depth (between rainscreen cladding and insulation): 50 mm. Ventilation inlets and outlets min. 50 cm <sup>2</sup> /m
f	Insulation (thickness)
g	Distance min. 5 mm

Building/ Department	Alg.		TRESPA®		Remarks	
Revision	Drawn Jan de Jonge	Date JAN 2016	Passingen I.S.O.	A3	PURA FS h2.1	10
Date	Scale 1:2			Name	Façade cladding with Trespa® PURA FLUSH Siding Detail h2.1 – External corner	
				Size	Number	Revision Sheet

Copyright ©2015 by Trespa International B.V.. This print is generated by you from www.trespa.info. By accessing www.trespa.info and printing this document you have accepted the Terms of Use (disclaimer) of www.trespa.info. Please refer to mentioned website for all conditions that apply to this document. Not all the systems shown in this document may be suitable for all applications and jurisdictions. We provide you with testing, code and design data for informational purposes only and strongly recommend that you or any other user of this document obtains independent advice regarding compliance with design requirements, applicable codes, laws and regulations, and test standards. Please check your local codes and design requirements for proper use. Trespa International B.V. disclaims all liability in relation to your use of this document.